

# 大阪歴史博物館 Osaka Museum of History

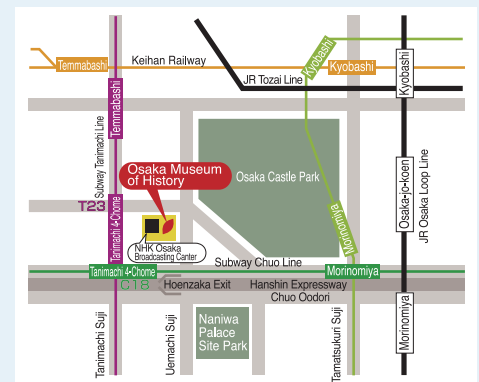
Explore it, Feel it, Think about it.  
Where People Experience  
the History of Osaka

Take the Elevator to the 10th Floor.  
From there, begin  
walking through the History of Osaka.  
4 Periods are introduced  
with the main themes presented  
through dynamic visuals.

## Exhibition Course

Two Courses have been laid out for touring the Museum. One is the "Highlight Course," which allows you to take in Osaka history in about an hour by drawing attention to the life-size reconstructions, scale models, and key photographs and movies. The other route follows the "Complete Course", which gives a richer experience by taking you more slowly through the museum so that you can enjoy all of the individual exhibits at your own pace. Finally, views of the Osaka Castle and the Naniwa Palace are afforded visitors both within the exhibits and at intervals along the tour.

## Access



**By Train and Bus**  
Subway Tanimachi Line and Chuo Line, "Tanimachi 4-Chome Station", Close to Exit ② or ⑨

**From Kansai International Airport**  
-70 Minutes by Train (JR Tennoji Station Change to Subway Tanimachi Line)  
-50 Minutes by Car

**From Itami Airport**  
-55 Minutes by Train (Hankyu Umeda Station Change to Subway Tanimachi Line)  
-40 Minutes by Car

**From Shin-Osaka Station**  
-30 Minutes by Train (Subway Midosuji Line to Hommachi Station, Change to Subway Chuo Line)  
-20 Minutes by Car

## Information

**Hours** 9:30-17:00 \*Please Enter 30 Minutes Prior To Closing

**Closed** Tuesdays (If Tuesday is a National Holiday, Closed Wednesday), 28 December - 4 January

**Admission** Adults-600 Yen (540 Yen), High School and University Students - 400 Yen (360 Yen), Elementary and Junior High School Students (Free), \*Group Rates Available for groups of 20 or more. \*Special Exhibition Tickets may be Purchased for An Additional Price.

**Parking** Rates (1 Hour 500 Yen, 200 Yen for every 30 Minutes after).



# 大阪歴史博物館

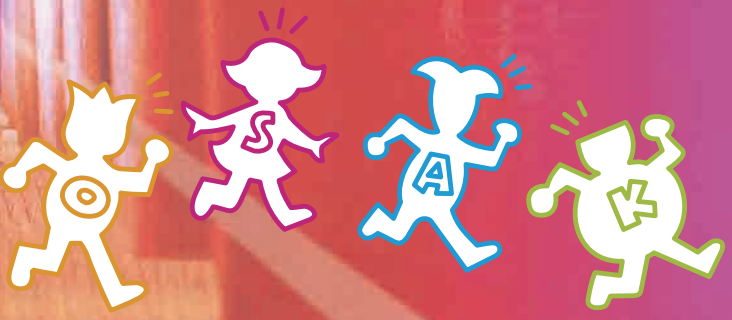
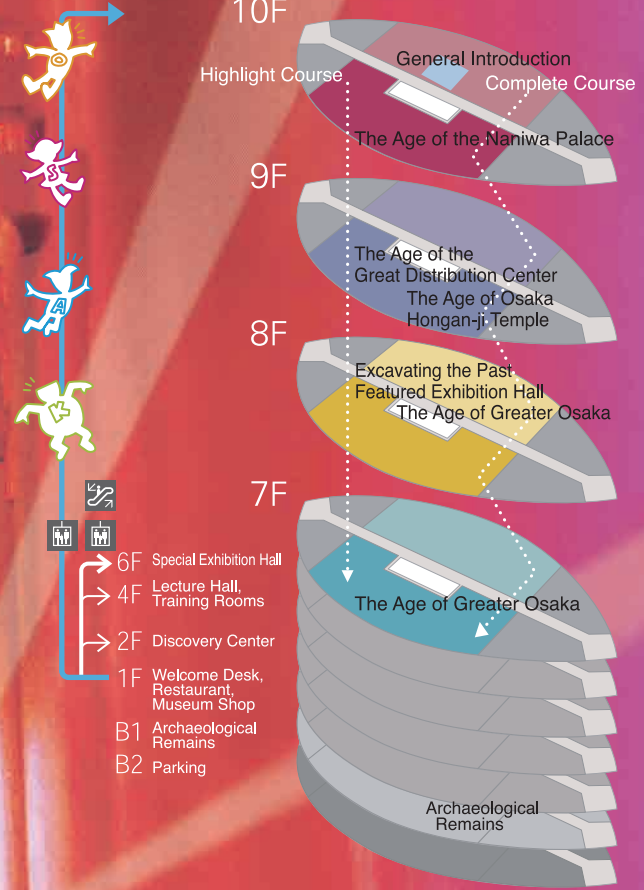
Nicknamed "Naniwa Rekihaku"  
**Osaka Museum of History**

1-32 Otemae 4-Chome, Chuo-ku, Osaka City, 540-0008  
Tel 06-6946-5728

Home Page (<http://www.mus-his.city.osaka.jp/>)



To the Permanent Exhibit



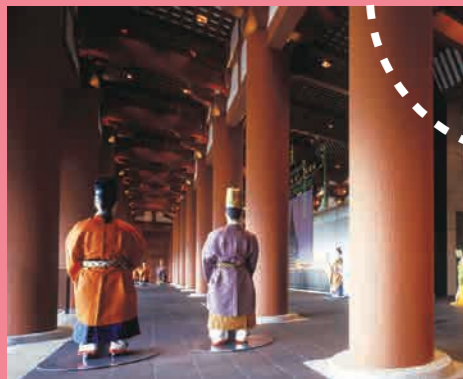


# 10F

## The Ancient Period Floor

From the Entrance Hall, take the elevator to the 10th Floor. There, you will be greeted by a partial reconstruction of the Daigokuden of the Nara Period Naniwa Palace. Here life-size replicas of the vermilion-painted pillars 70cm in diameter surround mannequins in period court dress and numerous videos depicting ancient court life.

### It's a Sensation! The Daigokuden.



Court Lady: "I am an Imperial Retainer. I will guide you through the palace and show you points of interest."



# 9F

## Middle Ages and Early Modern Period

After leaving the escalator at the 9th floor you arrive in Osaka during the time of Hongan-ji Temple which fought with Lord Oda Nobunaga. Enjoy a tour of "the Water City" in Edo Period Zone with your guide, the Bunraku puppet "Naniwaya". Here the bustling town life is presented in 1/20th scale miniature models. See the lively townspeople of Naniwa.

### Tour the Water City.



Naniwaya: "I am the Bunraku puppet, Naniwaya Toranosuke. I will help you to enjoy a tour of the Edo Period Water city of Osaka."



# 7F

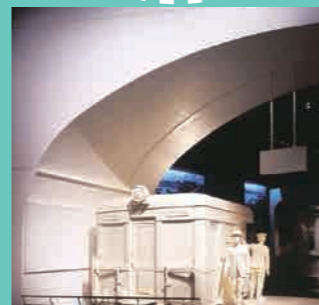
## Modern and Contemporary Period Floor

The trip through time that began with the 10th floor ends here on the 7th floor. Now we will encounter a more familiar Osaka on the eve of what we know now. The crowded, bustling atmosphere of the street corners of Shinsaibashi and Dotombori in the Late Taisho and Early Showa Periods are realistically reproduced here. It is a walk through the prosperous modern Osaka with the images of those days.

### Panorama of the town.



Modern Girl: "I am a modern girl who is in the height of fashion from the Early Showa Period of Osaka."



# 6F

## 6F Special Exhibition Hall

The 6th Floor has been reserved as a space for display of special exhibitions and various objects including National Treasures and Important Cultural Properties. This hall will be used for special exhibits aside from those created by this museum which are displayed in the Featured Exhibition Hall. These special exhibits will include traveling exhibits and jointly sponsored exhibits.



# 2F

## 2F Discovery Center "Naniwa History School"

A wide range of items has been collected and about 6000 books and other items related to Osaka's history and culture are freely available at the "Naniwa History School". Access to a wide range of information is available via the information terminals in the discovery center. In addition, specially trained staff are available for consultation and assistance in research.



# 8F

## Excavating the Past and Featured Exhibition Floor

### Archaeological Challenge.

Welcome to the Naniwa Archaeological Resource Center. A life-sized archaeological excavation replica awaits your discovery and investigation. Use various authentic archaeological tools and reference materials in the workshop to complete a project.

Director: "I am the research project director, Dr. Suko. I'll show you some interesting things about archaeology!"



# 1F

## Archaeological Remains

About 1350 years ago, during the Asuka Period, the area of the present day museum was the location of the Naniwa-Nagara-Toyosaki Palace. Excavations in this area revealed the remains of a warehouse and separate walls and water supply facilities for the palace. Most of these partially excavated remains have been kept visible to display here at the museum.

### Inspect the preserved ancient remains

Book Your Site Tour on the 1st Floor Reception Desk



## 1F Museum Shop, Restaurant, Entrance Hall and Atrium

### 1F Museum Shop and Restaurant

A variety of items such as souvenirs and museum books are available in the museum shop. The restaurant is a good place to eat, drink and relax. It's more rewarding to explore history with friends and family.

### 1F Entrance Hall and Atrium

On the first floor in the Entrance Hall there is a corner dedicated to inspection of the displayed remains of the Naniwa Palace, visible near the Welcome Desk beneath glass panels in the floor. Various events will be held in the spacious 1,833m<sup>2</sup> Atrium with a 35m tall ceiling that connects the museum with the NHK Osaka Broadcasting Center.

